



MAP

Mitra Adiperkasa

AUDITED RESULT

FY/Q4 2022



TABLE OF CONTENTS

1

OVERVIEW OF MAP GROUP

2

**FY/4Q22 FINANCIAL
HIGHLIGHTS**

3

**STRATEGIES FOR 2023 &
BEYOND**

4

APPENDIX

OVERVIEW OF MAP GROUP

3,059

Retail Stores*

+ **26 online stores**

+ Presence in 3rd party online stores

150⁺

World Class Brands

110⁺

Retail Concepts

88

Cities**

24,896

Employees

360°
Retailing

MAP CLUB

MAP
GIFT VOUCHER

MAP RETAIL ACADEMY



* Data includes Burger King and Domino's Pizza

** Excluding regional countries

MORE THAN 150 EXCLUSIVE BRANDS

ENTERTAIN OUR SHOPPERS 24 HOURS A DAY

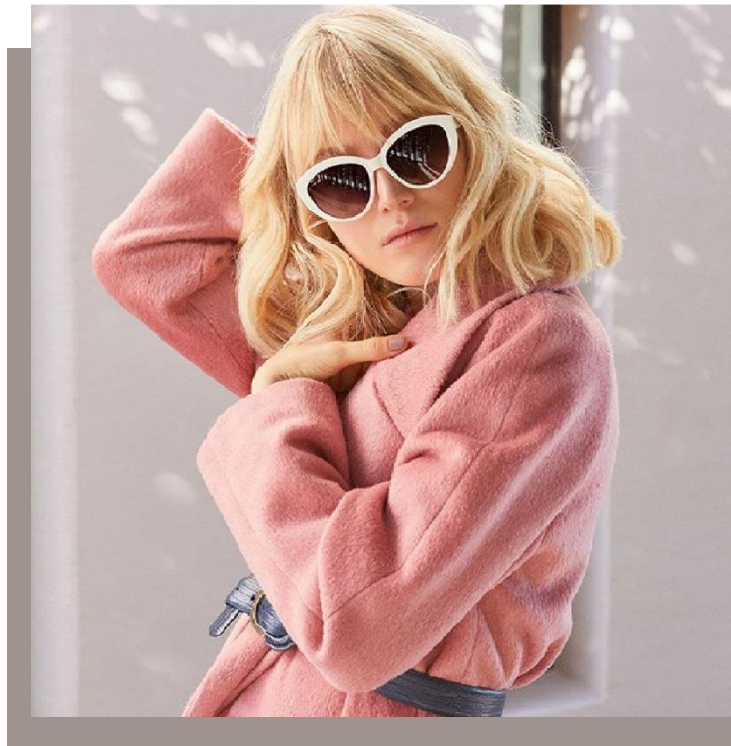


MAP RETAIL FOOTPRINT 2022

	No. stores	Space (sqm)
CONSOLIDATED	2,660	967,259
DEPT STORE	57	349,157
SPC. STORE	1,842	418,109
ACTIVE	1,327	270,129
FASHION & BEAUTY	455	141,108
DIGITAL	60	6,872
F & B	716	188,777
OTHERS	45	11,216

Exclude:

180 Burger King & **219** Domino's Pizza





FY/4Q 2022 FINANCIAL HIGHLIGHTS

FINANCIAL HIGHLIGHTS

*) After PSAK 73/ IFRS 16

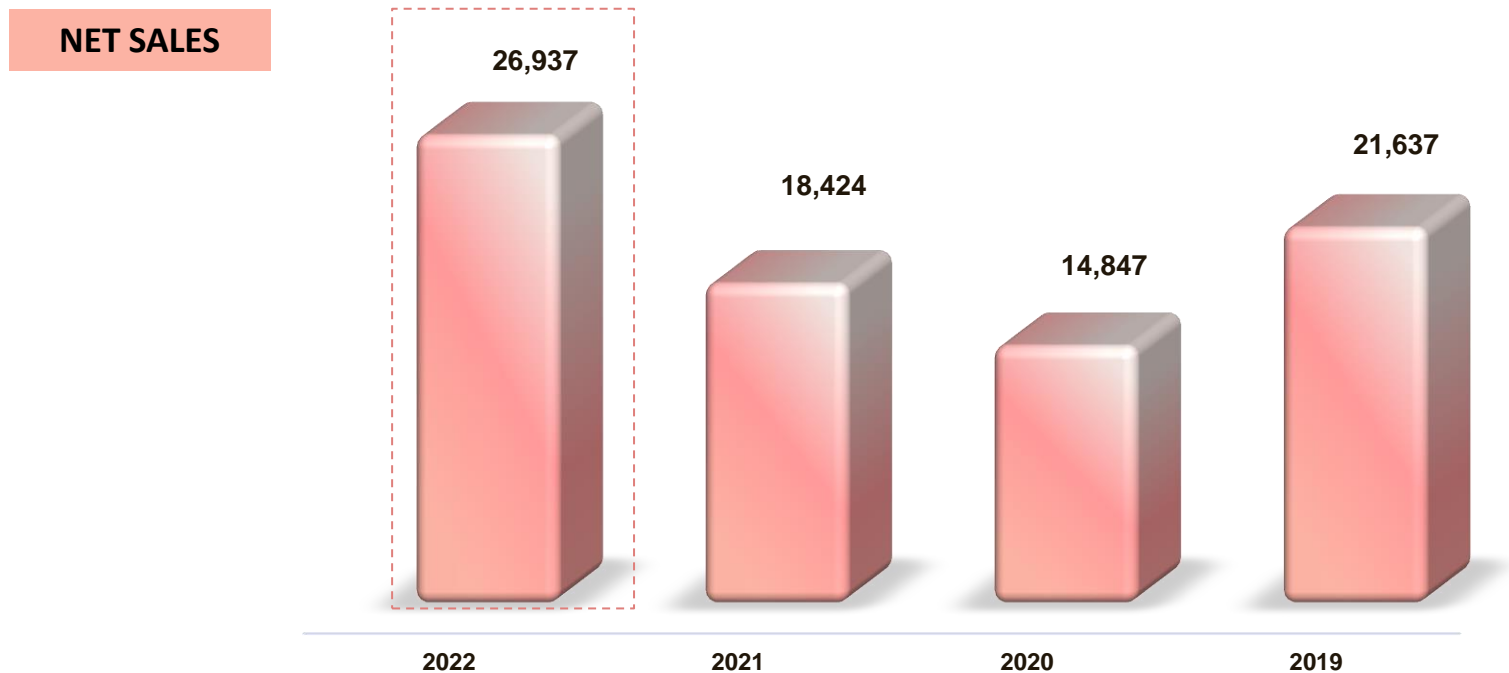
IDR bn, %	FY22	FY21	Growth (%)	4Q22	4Q21	Growth (%)
Net sales	26,937	18,424	46.2%	8,116	6,343	27.9%
Gross Profit	12,029	7,692	56.4%	3,541	2,670	32.6%
GPM (%)	44.7%	41.8%		43.6%	42.1%	
EBIT	3,070	1,222	151.3%	891	833	7.0%
EBIT Margin (%)	11.4%	6.6%		11.0%	13.1%	
EBITDA	5,467	3,438	59.0%	1,541	1,419	8.6%
EBITDA Margin (%)	20.3%	18.7%		19.0%	22.4%	
Net Profit (Loss)	2,505 ^{*)}	468	435.7%	737	583	26.5%
NPM (%)	9.3%	2.5%		9.1%	9.2%	

*) Include gain on BK partial divestment in 1Q22 of Rp309.25 billion (net tax)

**) Before Non-controlling Interest

NET SALES & GROWTH (IDR bn, %)

	<u>2022</u>	<u>2021</u>	<u>2020</u>	<u>2019</u>
% Growth YoY	46.2%	24.1%	-31.4%	14.4%



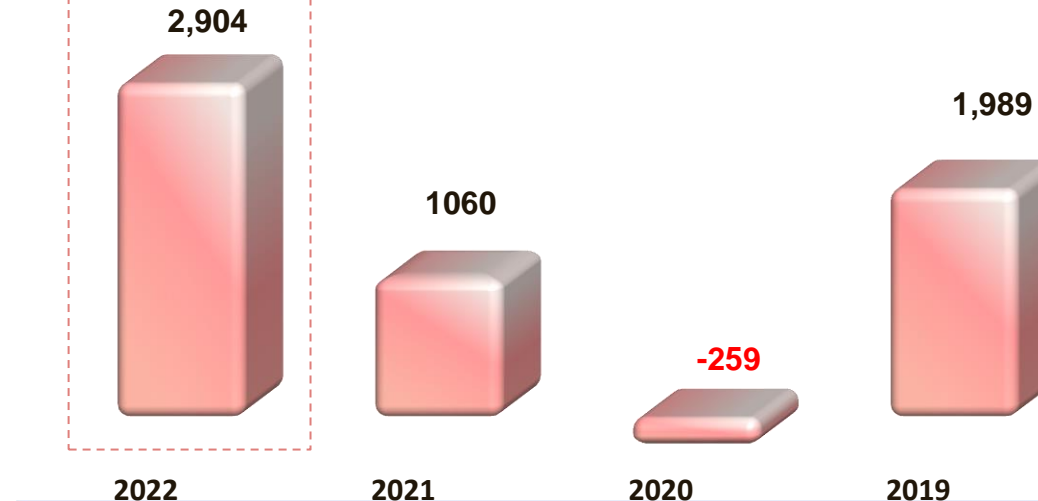
PROFITABILITY

*) Prior PSAK 73/ IFRS 16

(IDR bn, %)

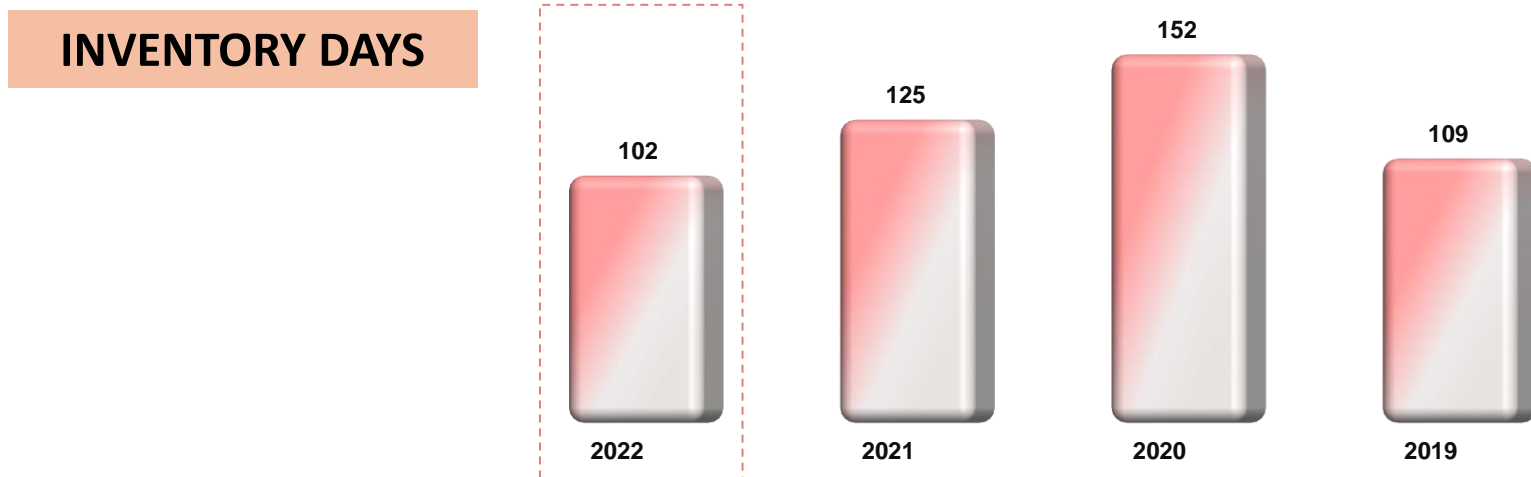
	<u>2022</u>	<u>2021</u>	<u>2020</u>	<u>2019</u>
Gross Margin	44.7%	41.8%	41.6%	47.7%
EBIT Margin	10.8%	5.8%	-1.7%	9.2%
EBITDA Margin	14.0%	10.5%	4.5%	13.2%

EBIT



INVENTORY LEVEL (Days, IDR bn, %)

	<u>2022</u>	<u>2021</u>	<u>2020</u>	<u>2019</u>
Aging inventory > 6 month	25 %	43 %	38 %	23 %



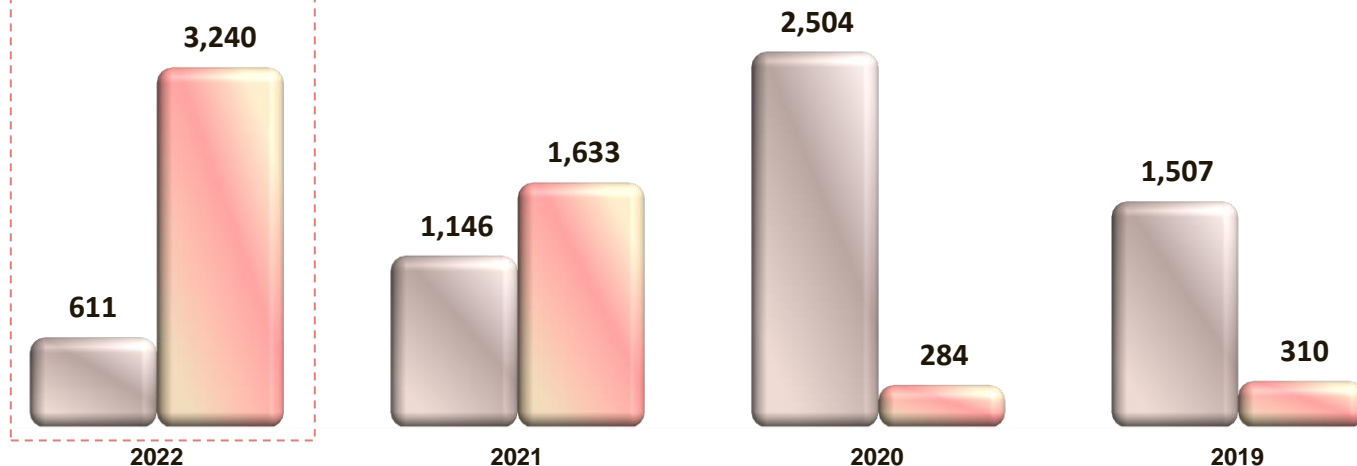
Our ability to absorb and utilize data has greatly increased year after year, resulting in a significantly faster selling cycle for MAP and eventually improve our profitability from moving our best-selling products. The end result has meant more newness at the stores, and manageable aging inventory level.

DEBT STRUCTURE & LEVERAGE (IDR bn, %)

LEVERAGE*

	<u>2022</u>	<u>2021</u>	<u>2020</u>	<u>2019</u>
Net DER	-33.3 %	-22.8%	-4.3%	-4.2%
Blended CoF	5.8 %	5.4%	6.7%	6.9%

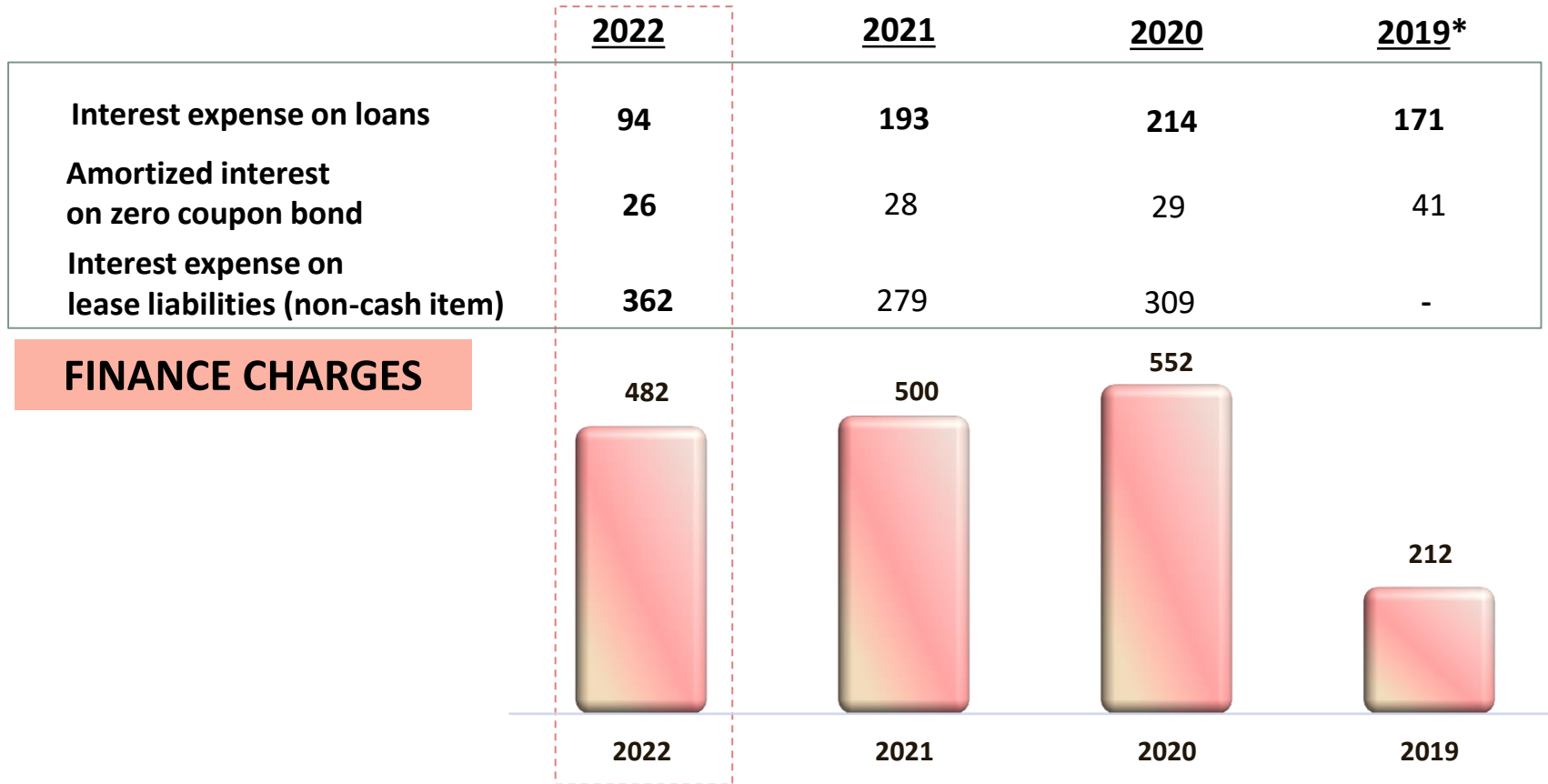
GROSS DEBT



*) Exclude zero coupon bond (GA)

■ Gross Debt ■ Net Cash

FINANCIAL CHARGES STRUCTURE (IDR bn)



*) no restatement for FY19 book (still based on old standard PSAK 30)

BALANCE SHEET (IDR bn)

ASSETS	As of 31 Dec22	As of 31 Dec21	As of 31 Dec20	LIABILITIES & EQUITY	As of 31 Dec22	As of 31 Dec21	As of 31 Dec20
Cash & Equivalents	3,851	2,778	2,788	Bank loan	611	1,146	2,504
Account Receivables	899	606	508	Account Payable	3,309	2,520	2,486
Inventories	4,699	3,731	3,715	Bonds Payable	430	404	376
Property, Plant, Equipment	3,841	3,587	3,926	Lease Liability	4,631	3,548	3,919
ROU Asset	4,736	3,582	4,067	Other Liabilities	2,259	2,000	1,788
OTHERS	2,942	2,484	2,643	Equity & Minority Interest	9,728	7,150	6,574
TOTAL ASSETS	20,968	16,768	17,647	TOTAL LIABILITIES & EQUITY	20,968	16,768	17,647

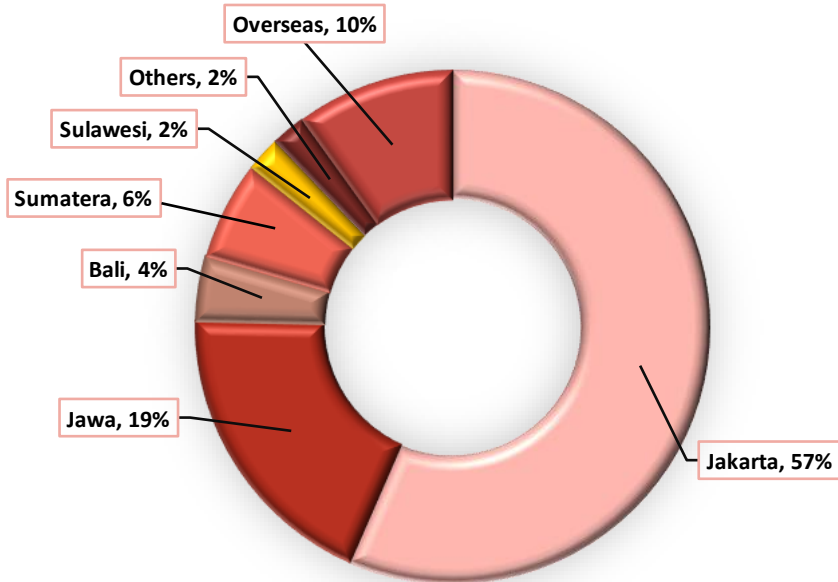
OUR NEXT PHASE OF RAPID GROWTH

ACCELERATE EXPANSION

After seizing opportunity to further strengthen our foundation during
Covid-19

“MAP is now fit for our next phase of rapid growth”

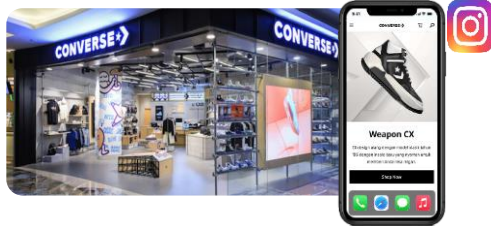
GEOGRAPHICAL SALES



Accelerating Regional Branded Commerce

Managing and marketing huge brands in Indonesia & Regional countries with large populations and strong GDP fundamentals by streamlining offline + online + all retail touch points to maximize sales potential.

INDONESIA



MALAYSIA



SINGAPORE



VIETNAM

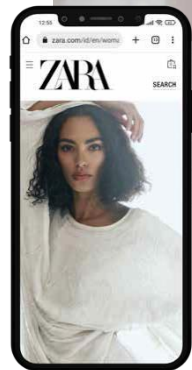


PHILIPPINES

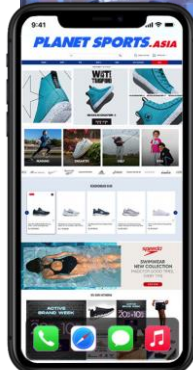


Streamlining Retail Experience Options

- Integrated data driven digital ecosystem
- Engaging & satisfy our shoppers with seamless unification of purchase options across all physical, digital & social channels



ZARA



**PLANET
SPORTS**



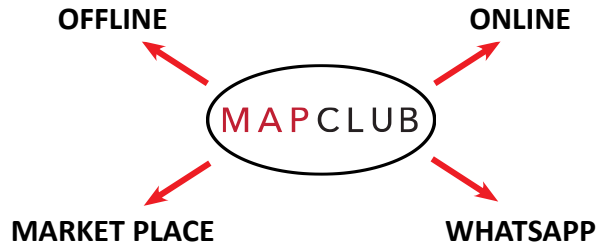
digimap

Execute Digital Change

Build an integrated data driven digital ecosystem to refine our planning, purchasing, selling & speed to market across ASEAN.

MAP CLUB – One power App for branded shopping

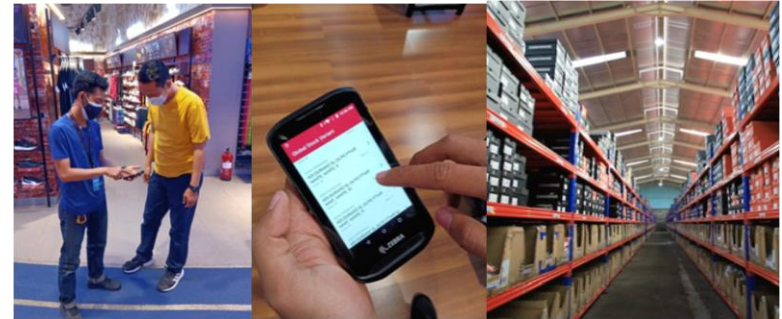
It unifies data from all our sales channels enabling more targeted services to the company's most frequent shoppers



- **Members, as per December 30th, 2022** : 6.2 million
- **Average value per transaction** : Rp 901.4 k
- **Average shopping frequency per year** : 4.7 x

Endless Aisle (Save The Sale)

- A process to optimize the company's inventories by online access to all stores and DC stocks nationwide.
- When a size or color is not available, staff can utilize PDT to fulfill from alternate destinations. Product is then dispatched to the customer address.



DIGITAL RETAIL STORES

MAP CLUB

ACTIVE

- Planet Sports.Asia
- Sports Station
- Foot Locker ID
- Foot Locker PH
- Converse
- Crocs
- Skechers
- Reebok
- New Balance
- Linea Shoes
- Kidz Station
- LEGO

FASHION

- Zara ID
- Zara VN
- Massimo Dutti ID
- Massimo Dutti VN
- Pull and Bear
- Stradivarius
- Bershka
- Zara Home
- Lacoste
- Mango
- Tumi
- Sephora
- Marks & Spencer

DIGITAL

- Digimap

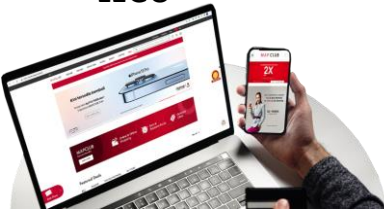
OTHERS

- Kinokuniya

WHATSAPP CHAT & BUY

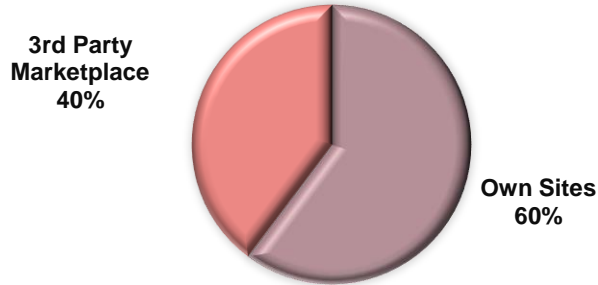
3rd PARTY MARKETPLACES

- Shopee
- Tokopedia
- Zalora
- Lazada
- Blibli
- iStyle
- Grabmart
- Happyfresh

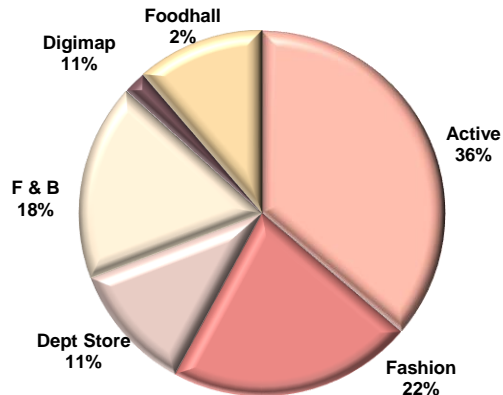


DIGITAL PERFORMANCE (IDR bn, %)

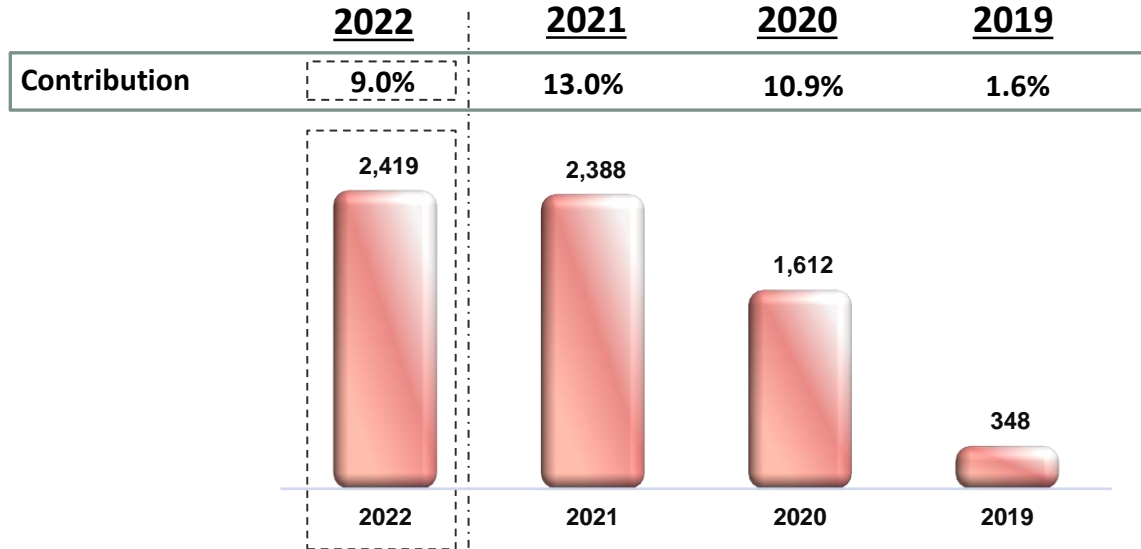
CONTRIBUTION BY CHANNEL



CONTRIBUTION BY SEGMENT



DIGITAL SALES PERFORMANCE



FY22 Sales Contribution

9.0%

Strategic Partnerships

Foot Locker

Partnership with Foot Locker for omni channel retail in the markets of Indonesia, Philippines and Thailand.



Converse & Reebok

Ventured into Singapore and Malaysia



Subway

- A new major addition to MBA's brand portfolio
- 53 stores in Indonesia (end of Dec 2022)





Appendix

Appendix I: Company Overview



MILESTONES

1995

- **Incorporation**
Started with Sports before venturing into Fashion and Lifestyle

1997

- Foray into **Kids products** (toys & apparel)

2002

- Diversified into **Food & Beverage** with Starbucks Coffee
- Started operations of **Garment Factory** in Gunung Putri, Bogor

2003

- Ventured into **Department Stores**



2004

- **IPO of MAP**
(Listed on IDX))



2005

- **Best Managed Company** in Indonesia - AsiaMoney



2007

- **Best Managed Company** in Indonesia – FinanceAsia



2011

- **Top 40 Companies** in Indonesia – Forbes Indonesia



2012

- **Most Admired Companies** in Indonesia – Fortune Indonesia
- **Best Capital Award** (nomination) – Indonesia Stock Exchange
- **#1 Retail Company** in Indonesia – SWA Magazine

2013

- **Nomination for Retailer of the Year (Emerging Market)** – World Retail Congress



2014

- **Most Powerful & Valuable Company** in Indonesia (Retail) – Warta Ekonomi
- **Corporate Social Responsibility (CSR) Award** – Finance Asia
- **Investor Relations Award** – FinanceAsia
- **Strategic partnership** with Everstone for Burger King and Domino's Pizza

MILESTONES

2015

- **Most Admired Companies** in Indonesia (Retail) – Warta Ekonomi
- **Strategic partnership** with CVC for Active Division (MAA)

2016

- Launch of **MAPEMALL.com**
- Launch of **MAP Club**
- Launch of **MAP Retail School**
- **Ventured into Vietnam** (First Zara Store in HCM City)
- **Strategic partnership** with General Atlantic for F&B (MBA)

2017

- **IPO of MBA** (MAP Boga)
- **Further expansion in Vietnam**
- **Best Mid-Cap Company** in Indonesia (3rd placing) – FinanceAsia
- **Best CEO** – Obsession Media Group
- **Most Powerful Company** (Retail Trade) – Warta Ekonomi
- **“Best in CSR”** – Padmamitra Award from Jakarta Provincial Government

2018

- **IPO of MAA** (MAP Active)
- **“Best in CSR”** – Padmamitra Award (National level) – for excellence in CSR from Indonesia’s Ministry of Social Affairs and Forum CSR Kessos
- **Best in Corporate Communication** – SWA Group Magazine
- Launch **Planetsports.asia** & **Kidzstation.asia**

2019

- **Ventured into new-age technology** with the launch of Digimap (Apple Premium Reseller)
- Launched **Zara.com/id** & **Zara.com/vn**
- **Launched Starbucks Dewata**, the biggest and one-of-a-kind Starbucks Reserve in South East Asia

2020

- **Ventured into Philippines** (MAP Active)
- **Top 50 Companies in Indonesia** - Forbes Indonesia

2021

- **Bank Indonesia’s Best Corporate Statistics Respondent** – Bank Indonesia
- **PT Panen Lestari Indonesia “Best CASA (Dept. Store Merchant Category)”** – Bank Rakyat Indonesia



2022

- **Ventured into Singapore and Malaysia** (Map Active)
- **Analyst’s Favourite in the Consumer Cyclical Sector** – CSA Institute
- **Launched 1st Foot Locker store in Manila, Philippines.**
- **Rise in the year of Change; Retail Category** – Business Indonesia (MAPA)

ORGANIZATION STRUCTURE

BOARD of COMMISSIONERS

Sri Indrastuti Hadiputranto
Independent President Commissioner

GBPH. H. Prabukusumo, S.Psi
Independent Vice President Commissioner

Hendry Hasiholan Batubara
Commissioner

BOARD of DIRECTORS

H.B.L. Mantiri
President Director

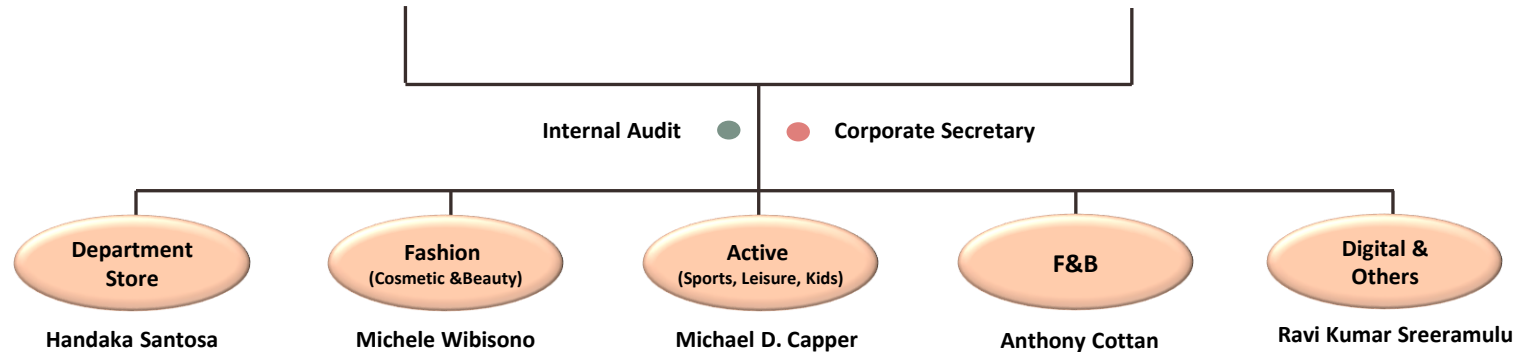
V.P. Sharma
Vice President Director

Susiana Latif
Director

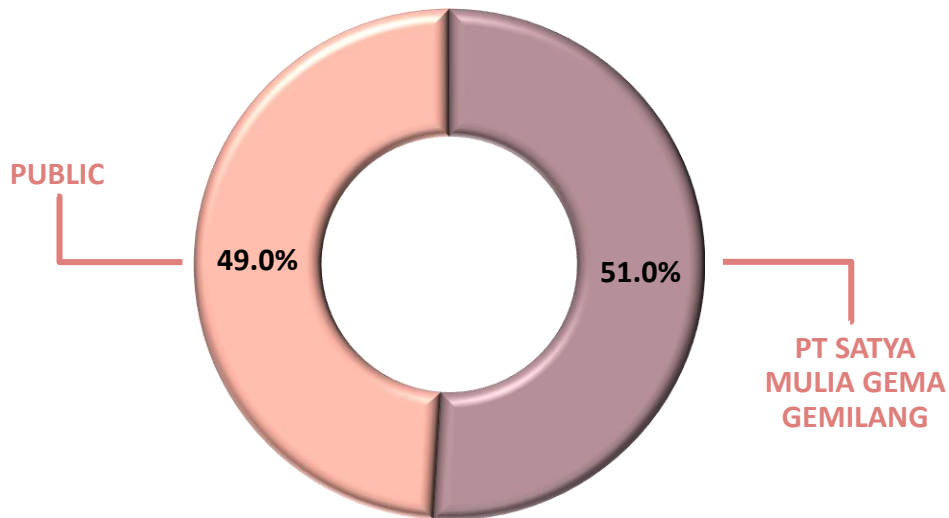
Michael D. Capper
Director

Sjeniwati Gusman
Director

Handaka Santosa
Director



SHAREHOLDER STRUCTURE



MAP – as at 31st December 2022

Local Share Ownership	64.0%
Foreign Share Ownership	36.0%

Note: There is no affiliation between numbers of the board of Commissioners, the Board of Directors, or Majority and/or Controlling Shareholders.

Appendix II: Financials

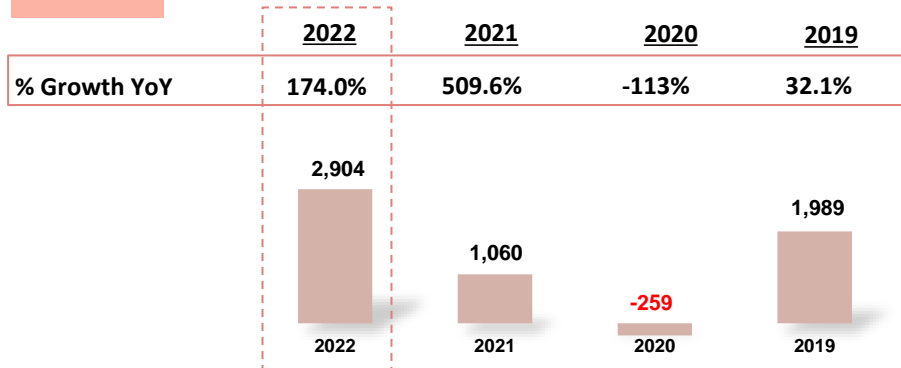


PROFITABILITY

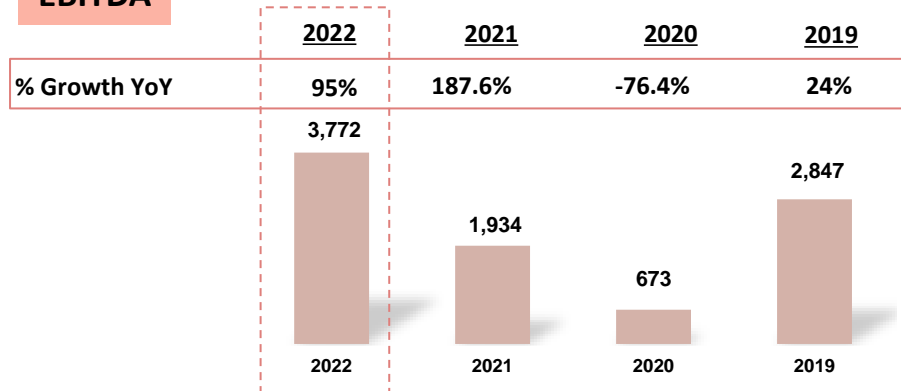
*) Prior PSAK 73/ IFRS 16

(IDR bn, %)

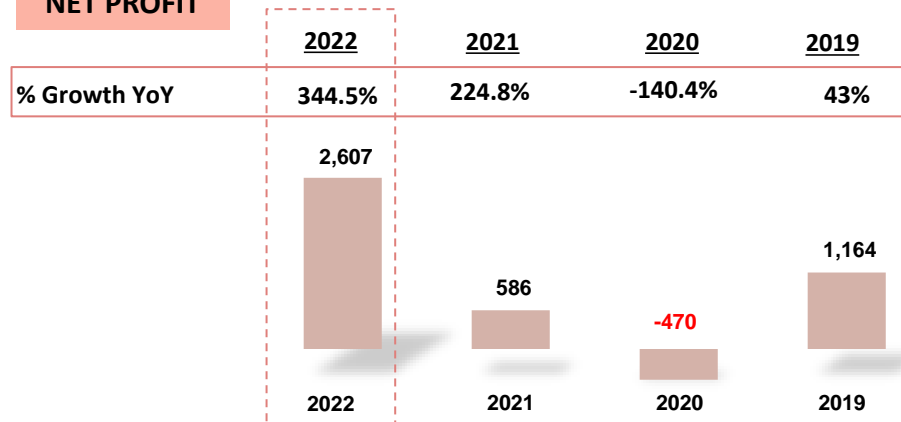
EBIT



EBITDA



NET PROFIT



**) Include gain on BK partial divestment in 1Q22 of Rp309.25 billion (net tax)

SPECIALTY STORE

*) After PSAK 73/ IFRS 16

In IDR BN	FY 22	FY 21	4Q22	4Q21
Net Revenue	20,665	13,645	6,327	4,810
<i>% Growth</i>	<i>51.5%</i>	<i>27.5%</i>	<i>31.5%</i>	<i>37.2%</i>
EBIT *)	2,490	1,035	751	622
<i>% Ebit Margin</i>	<i>12.0%</i>	<i>7.6%</i>	<i>11.9%</i>	<i>12.9%</i>

FASHION & BEAUTY

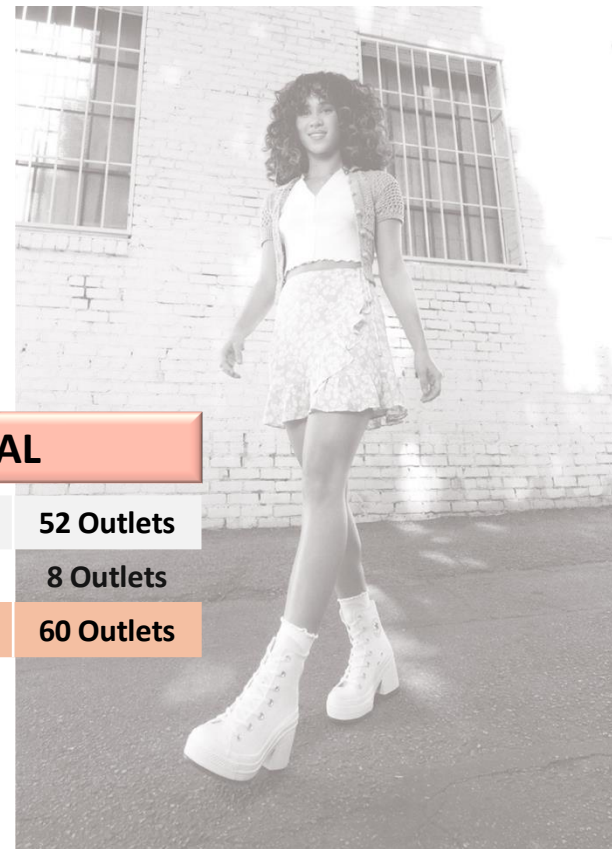
ZARA	16 Outlets
MARKS & SPENCER	21 Outlets
COTTON ON	56 Outlets
SEPHORA	17 Outlets
AMORE PACIFIC BRANDS	19 Outlets
BOOTS	17 Outlets
TUMI	12 Outlets
OTHER CONCEPTS	297 Outlets
TOTAL FASHION	455 Outlets

ACTIVE

SPORTS STATION	342 Outlets
PLANET SPORTS	29 Outlets
SKECHERS	130 Outlets
CONVERSE	119 Outlets
FOOTLOCKER	11 Outlets
KIDZ STATION	121 Outlets
OTHER CONCEPTS	575 Outlets
TOTAL ACTIVE	1,327 Outlets

DIGITAL

DIGIMAP	52 Outlets
DIGIBOX (Vietnam)	8 Outlets
TOTAL DIGITAL	60 Outlets



FOOD & BEVERAGE

*) After PSAK 73/ IFRS 16

In IDR BN	FY 22	FY 21	4Q22	4Q21
Net Revenue	3,437	2,431	979	779
<i>% Growth</i>	<i>41.3%</i>	<i>18.9%</i>	<i>25.6%</i>	<i>32.8%</i>
EBIT *)	215	18	62	93
<i>% Ebit Margin</i>	<i>6.3%</i>	<i>0.7%</i>	<i>6.4%</i>	<i>12.0%</i>



FOOD & BEVERAGE	
STARBUCKS COFFEE	540 Outlets
SUBWAY	53 Outlets
PIZZA MARZANO	23 Outlets
COLD STONE	18 Outlets
KRISPY KREME	34 Outlets
GODIVA	5 Outlets
GENKI SUSHI	32 Outlets
PAUL BAKERY	11 Outlets
TOTAL F&B	716 Outlets

BURGER KING	180 Outlets
DOMINO'S PIZZA	219 Outlets
TOTAL BK & DOM'S	399 Outlets



Ownership: 12.3% Ownership: 33.5%

DEPARTMENT STORE

*) After PSAK 73/ IFRS 16

In IDR BN	FY 22	FY 21
Net Revenue	2,109	1,853
% Growth	13.8%	4.5%
EBIT *)	308	131
% Ebit Margin	14.6%	7.1%

4Q22	4Q21
585	600
-2.5%	39.7%
63	97
10.8%	16.2%



DEPARTMENT STORE

SOGO	18 Outlets
SEIBU	2 Outlets
GALERIES LAFAYETTE	1 Outlets
THE FOODHAL	36 Outlets
TOTAL DEPT. STORE	57 Outlets

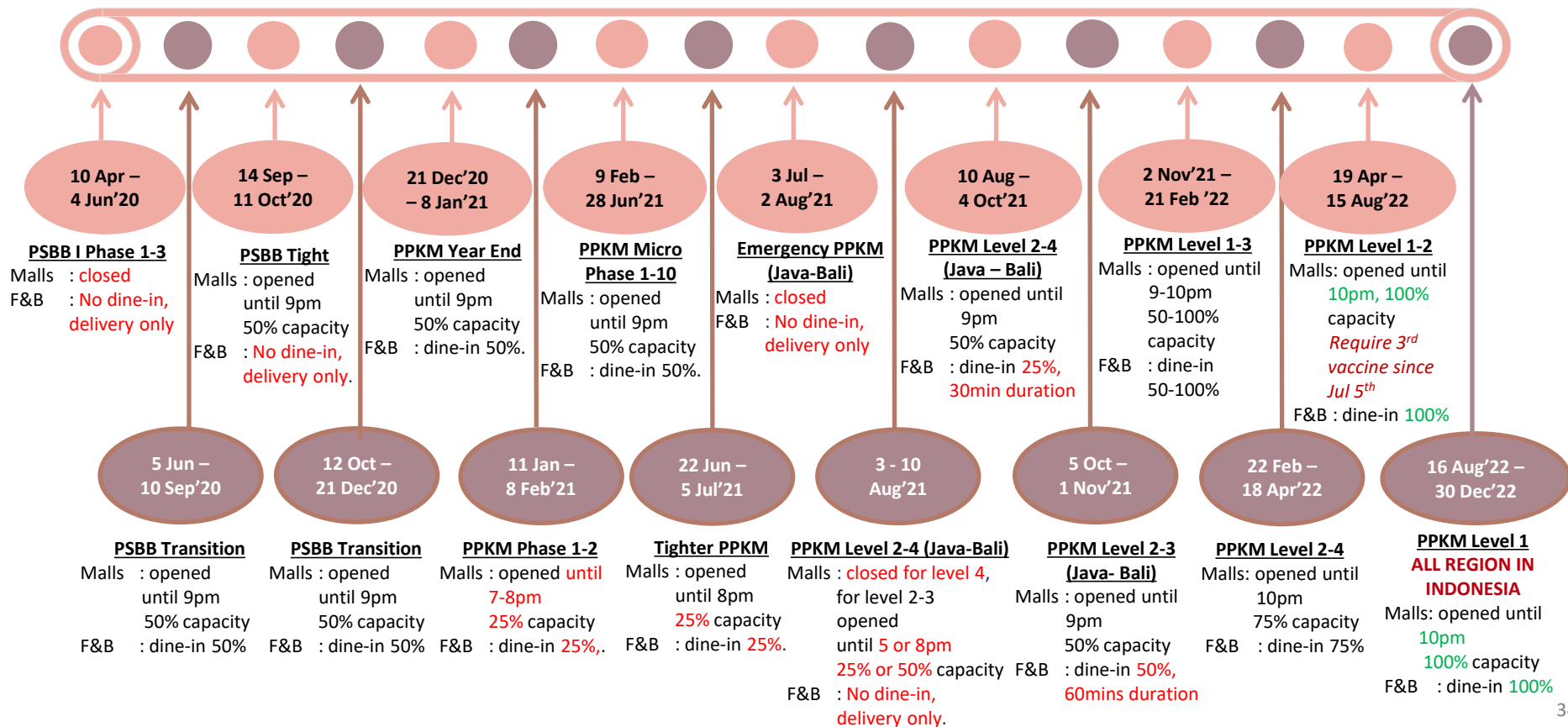


Appendix III:

Additional information

PSBB & PPKM TIMELINE

2020 – 2022



THANK YOU



INVESTOR RELATIONS CONTACT DETAILS:

Ratih Darmawan Gianda

VP Investor – Media Relations, Corporate Communication
and Sustainability for MAP Group

Email : Ratih.Gianda@map.co.id

" This presentation material contains the latest financial information, business strategies and the prospective financial information of the Company. The business strategies are subject to changes due to uncertainties that could affect the business of the Company and are not within the Company's control. The prospective financial information is prepared based on the assumption made by the Company and is presented on a basis consistent with the accounting policies adopted by the Company and it reflects the current reasonable judgment of the Company regarding the expected conditions. The prospective financial information is based on a number of assumptions which are inherently subject to significant uncertainty due to factors, which are not within the Company's control. The Company's actual result may differ from such forecast and such differences may be material. Under no circumstances should this prospective financial information be regarded as a representation or warranty with respect to the achievement by the Company of any particular result and there can be no assurance that the business strategies will not vary."